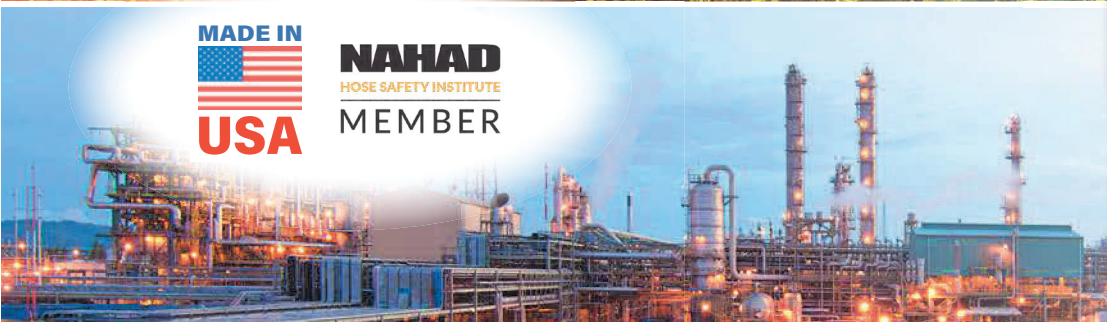




COUPLINGS AND MORE

# SHANK GUIDE



**NAHAD**  
HOSE SAFETY INSTITUTE  
MEMBER



# STEP 1: SHANK-TO-HOSE GUIDE

PT offers a wide range of shanks for the variety of hoses used throughout the industries. PT's shanks are available in various materials and sizes ranging from aluminum to stainless steel and various corrosion resistant metals and from 1/2" to 12".

Each shank's profile provides a different feature for the hose for which it was designed. Refer to the table below for selecting which shank best fits your hose application.

	PT Standard	Low Profile	C50	Undersized	Undersized with Bands	WSS	BRUSS
Water Hose	X	X	X	X	X	X	X
Water Suction & Discharge Hose	X	X	X	X	X	X	X
Dry Bulk Transport Hose	X	X	X	X			
Hot Air Blower Hose	X	X	X	X			
Material Handling Hose	X	X	X	X			
FEP & UHMW-Lined Hose		X					
PVC Hose		X	X	X			
Lay Flat Hose		X	X	X	X		
Sanitary & Food/BVG Transfer Hose	X	X	X			X	X
Cleaning Service Hose	X	X	X			X	X
Acid & Chemical Hose	X	X	X				
Fire Suppression Hose		X	X	X	X		

## STEP 3: RETENTION PRODUCTS



**PUNCH-LOK®**  
AMERICAN QUALITY SINCE 1936

### BANDING

Punch-Lok's extensive high-quality banding product line has every solution needed in hose banding applications. Punch-Lok® banding products

are available in stainless steel, galvanized steel, or other metals. Check out our online catalog to view our various banding tools and equipment.



P-7500™  
(3/8" up to 3/4" Banding)

P-1000™  
(3/8" & 5/8" Banding)

D-550™ Clamp Cutter

Banding Totes



Preformed  
Clamp



TA-3® Plus  
Machine



### SLEEVES & FERRULES

PT's ProGrip line of sleeves and ferrules are the toughest in the chemical, sanitary, and industrial applications. Each sleeve or ferrule has greater structural integrity due to

their extended manufacturing process. PT's C50HD ferrules are available with a serrated internal ID for extreme chemical and petroleum applications.



PT WSS  
Ferrule

PT Sanitary  
Ferrule

PT Sleeves

PT Ferrules

C50HD  
Ferrule



Call your local PT Representative today or go online to find out how PT has solutions for your needs!



# STEP 2: SHANK STYLES

Next to selecting the best hose for the application is choosing the best fitting for your hose. PT specializes in quick connect/disconnect couplings and other fitting ends for nearly every industry.

The information below is an overview of what shanks are best used for the different retention methods as well as the features and benefits of each shank.

## STANDARD

The Standard Shank is PT's most recognized shank which meets application requirements around the globe.

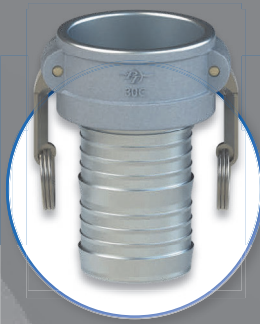
Its features include:

**INTERLOCK RING**  
ProGrip™ Ferrules compatible

**MAJOR BARBS**  
Added retention when used with Punch-Lok® Band Clamps

**INTERMEDIATE BARBS**  
Added retention and sealing to be used with ProGrip™ Sleeves

Sleeve/Ferrule/Band Clamp compatible



## LOW PROFILE

The Low Profile Shank features unique trapezoidal barbs that are less aggressive on hoses with sensitive ID's such as PTFE lined hoses.

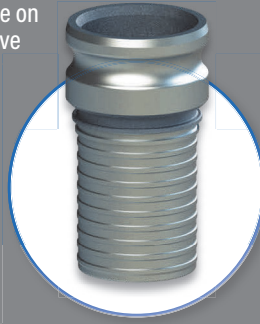
Its features include:

**UNIQUE BARBS**  
Trapezoidal shape ensures smooth surface area for easier fitting insertion

**INTERLOCK RING**  
ProGrip™ Ferrules compatible

**UNDERSIZED**  
Allows for easier installation into hoses with smaller ID's

Sleeve/Ferrule compatible



## UNDERSIZED (WITH OR WITHOUT BANDS)

The Undersized Shank is for hoses with smaller ID's than standard hoses.

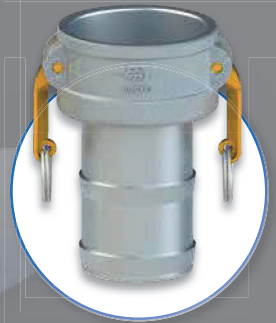
Its features include:

**UNDERSIZED**  
Allows for easier installation into hoses with smaller ID's

**NO MINOR BARBS**  
Ideal for banding applications

**BAND STYLE**  
Alternative design perfect for Lay Flat hose applications

Sleeve/Band Clamp compatible



## C50

PT's C50 Shank provides a solution for the vast variations of hoses.

Its features include:

**LEAD-IN**  
Easier installation of the fitting into the hose

**RELIEF BULB**  
Protects the hose during the crimping process

**UNIFORM BARBS**  
Ideal for maximum hose retention in crimping applications

Sleeve/Ferrule compatible



## WSS

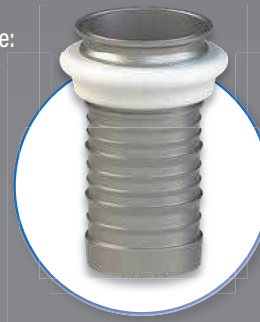
The WSS Shank is PT's solution to wine hose fittings.

Its features include:

**INTERLOCK RING**  
For use with ProGrip™ WSS Ferrules

**MAJOR BARBS**  
Added retention when used with Punch-Lok® Band Clamps

Sleeve/Ferrule/Band Clamp compatible



## BRUSS

The BRUSS Shank is PT's solution to brewery hose fittings.

Its features include:

**UNIFORM BARBS**  
Ideal for maximum hose retention in crimping or banding applications

Sleeve / Band Clamp compatible



# DO YOU PRACTICE: S.T.A.M.P.E.D.?

PT® is committed to keeping hose assemblers, users and the environment safe. When assembling your hose, please use safe practices and follow NAHAD's Hose Safety Institute (HSI) Guidelines to help us keep that vision of creating a safer work environment and a healthier planet.

PT believes in safety, so it is important that hose assemblers be familiar with the HSI's standard known as **"S.T.A.M.P.E.D."**:

<b>SIZE:</b>	I.D. and length; any O.D. constraints
<b>TEMPERATURE:</b>	material temperature conveyed and environmental conditions
<b>APPLICATION:</b>	the conditions of use
<b>MATERIAL:</b>	media being conveyed, type and concentration
<b>PRESSURE:</b>	assembly pressure that needs to be maintained
<b>ENDS:</b>	style, type, orientation, attachment methods, etc.
<b>DELIVERY:</b>	testing requirements and other requirements related to the customer

For more information on safe practices when assembling hoses, visit [NAHAD.org](http://NAHAD.org).

## HOSE ASSEMBLY TOOLS

PT continually strives to offer equipment to assist your hose shop in increasing its efficiency. Equipment such as the Rolite PT3 Fitting Master®, the TA-3® Plus Machine, and the PT S8iXL Crimp Machine are a few of the essentials for your hose shop.

SH 10 XL ECOLINE C.2



TA-3 PLUS® MACHINE



ROLITE PT3 FITTING MASTER®



## CRIMP CALCULATOR APP

Along with the tools PT offers, the **PT Crimp Calculator App**, simply search **"Hose Crimp Calculator"** which is the fast and easiest way to calculate hose

crimping dimensions. The assembler simply fills out basic information on the hose and the ferrule/sleeve being used then submits to generate a final crimp diameter.



CALL 800-654-0320 / EMAIL: [INFO@PTCOUPLING.COM](mailto:INFO@PTCOUPLING.COM)

**NAHAD**  
HOSE SAFETY INSTITUTE  
MEMBER



[www.ptcoupling.com](http://www.ptcoupling.com)



@ptcouplingusa



/ptcoupling

